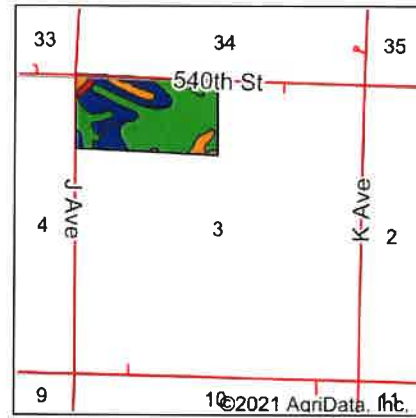
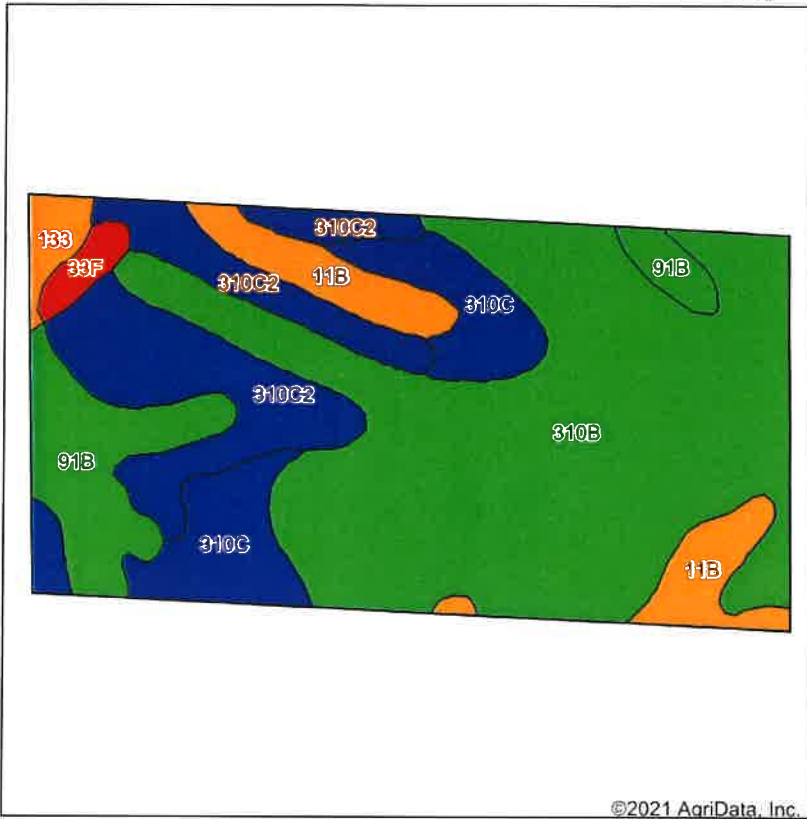


Soils Map



State: **Iowa**
 County: **Cherokee**
 Location: **3-91N-41W**
 Township: **Rock**
 Acres: **79.64**
 Date: **12/20/2021**



Soils data provided by USDA and NRCS.

©2021 AgriData, Inc.

Area Symbol: IA035, Soil Area Version: 31

Code	Soil Description	Acres	Percent of field	CSR2 Legend	Non-Irr Class *c	CSR2**	CSR	*n NCCPI Soybeans	
310B	Galva silty clay loam, 2 to 5 percent slopes	41.28	51.8%		Ile	95	71	76	
310C2	Galva silty clay loam, 5 to 9 percent slopes, eroded	13.20	16.6%		IIle	84	54	66	
310C	Galva silty clay loam, 5 to 9 percent slopes	8.97	11.3%		IIIle	87	56	77	
91B	Primghar silty clay loam, 2 to 5 percent slopes	7.68	9.6%		Ile	95	79	78	
11B	Colo-Judson silty clay loams, 0 to 5 percent slopes, occasionally flooded	6.10	7.7%		IIw	80	59	81	
133	Colo silty clay loam, deep loess, 0 to 2 percent slopes, occasionally flooded	1.29	1.6%		IIw	78	74	80	
33F	Steinauer clay loam, 14 to 25 percent slopes	1.12	1.4%		VIe	8	8	49	
Weighted Average						2.33	89.6	65.5	*n 74.7

**IA has updated the CSR values for each county to CSR2.

*n: The aggregation method is "Weighted Average using all components"

*c: Using Capabilities Class Dominant Condition Aggregation Method

Soils data provided by USDA and NRCS